



Participation of Local Fishermen for Implementation of Coral Reef Management Plan at Mu Koh Chang, Thailand

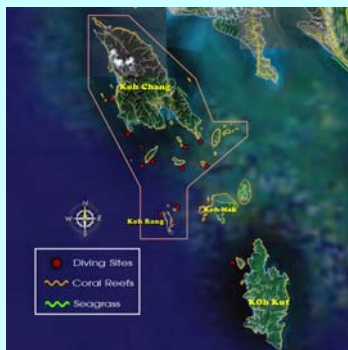


ESSP Open Science Conference
9th - 12th December 2006
Beijing, China

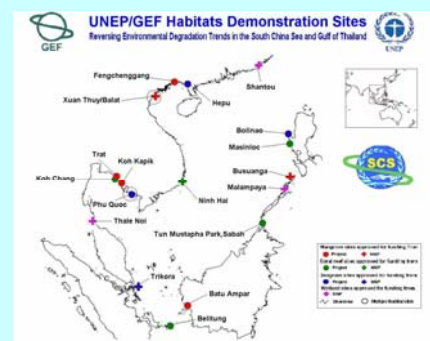
Thamasak Yeemin*, Nipat Somkleeb, Makamas Sutthacheep and Se Songploy

*Marine Biodiversity Research Group, Department of Biology, Faculty of Science, Ramkhamhaeng University, Bangkok 10240, Thailand

Tel/Fax: +66-2310-8415, E-mail: thamasakyeemin@yahoo.com, www.thaicoralreef.in.th



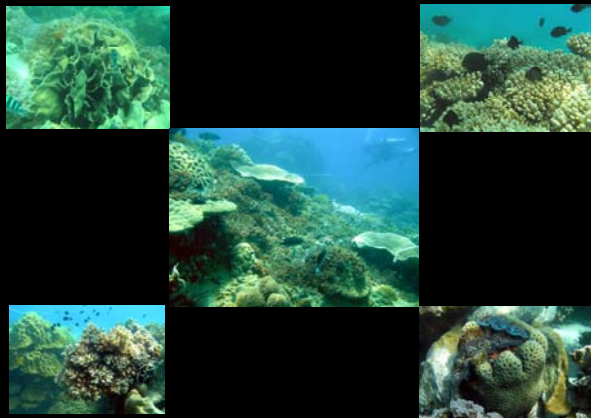
Mu Koh Chang was declared as a national park in 1982. It is also a special administrative zone for sustainable tourism development since 2002. There are about 60 Islands in the area with approximately 16 km² of coral reefs. The UNEP/GEF Project on Reversing Environmental Degradation Trends in the South China Sea and Gulf of Thailand selected Mu Koh Chang as one of the demonstration sites for coral reef subcomponent.



The severe coral reef bleaching phenomenon in 1998 caused considerably coral reef degradation. Coral recovery has been hampered mainly by anthropogenic disturbances such as sedimentation from infrastructure development, impacts from expansion of tourism business and unskilled divers and impacts from illegal fishing.



The present study provides the output and lessons learned from a project to support local fishermen for developing local guide tour centre, supporting alternative livelihood and encouraging participation of relevant activities.



Co-ordination among key institutions is urgently needed to maintain actively participation of local communities for reducing pressure on natural coral reefs. Elimination of destructive fishing gears and methods are still the major concerns for coral reef management in the Gulf of Thailand.

